

*City of Seminole*

September - December 2024

# PLAYZONE



get artsy.

with Paint Like Bob Ross







# Holiday Sail-a-bration

A Waterless Boat Parade

Sunday, December 8

6:00pm

Seminole's best and brightest light up 113th Street for this one-of-a-kind Holiday parade!

Interested in participating?

Contact Kacy Little at [klittle@myseminole.com](mailto:klittle@myseminole.com) or 727-391-8345



*THE RECREATION DEPARTMENT WOULD LIKE TO THANK THESE SPONSORS:*



# cellularsales



For more information on sponsorship opportunities with the Seminole Recreation Department, please contact 727-391-8345.



A Recreation Membership is required to utilize the Seminole Recreation Center. A Recreation Membership Card can be issued for ages three (3) and up. Recreation Memberships can be obtained in the Front Office.

Types of Membership	Price
City of Seminole Resident	FREE - With two (2) proofs of residency such as a Florida driver's license, current vehicle registration, current utility bill or property tax bill. Valid for two (2) years from date of issue.
Non-Resident Individual	\$150.00 - Individuals not paying City of Seminole taxes—valid for one (1) year from date of purchase.
Non-Resident Family	\$400.00 - Family of four (4), living in the same household. Each additional family member is an additional \$25.00. Valid for one (1) year from date of purchase.
Non-Resident Seasonal	\$100.00 - Valid from October 1 through April 30.
Military	FREE - A resident with a valid Resident Membership Card may enroll a relative on military active duty and their immediate family for a ten (10) week temporary membership card. The enrolled relative must present a military ID at the time of enrollment.
Guests	\$5.00 - Anyone utilizing the facility without a membership.



# information

## Holland G. Mangum Recreation Complex

9100 113<sup>th</sup> Street N.  
Seminole, FL 33772  
727-391-8345  
www.myseminole.com

### Hours of Operation

Monday-Friday, 6:00am-8:00pm  
Saturday, 8:00am-2:00pm



## MAYOR & CITY COUNCIL

Mayor Leslie Waters  
Vice Mayor Chris Burke  
Councilor Thom Barnhorn  
Councilor Ray Beliveau  
Councilor Mark Ely  
Councilor Jim Quinn  
Councilor Trish Springer

## RECREATION ADVISORY BOARD

Tom Marrah, Chair  
Ali Bean  
Carl Glebowski  
Leah Hoffman  
Elenna Morris  
Kadi Tubbs  
Fenix White

## RECREATION STAFF

Becky Gunter, CPRP, Recreation Director  
Susy Cabral, Administrative Assistant  
Alex Koagel, Recreation Superintendent  
Program Coordinators: Maren Anderson, Ashley Frydrych, Charlie Stokes  
Special Events & Facilities Coordinator: Kacy Little  
Recreation Leaders II: Adam Arrowood, Wyatt Leonard  
Recreation Leaders I: Tom Austin, Asher Ritch, Stephanie Storm  
Custodians: Justin Evans, Mike King

### FEES, PROGRAMS, REFUNDS

Fees and programs are subject to change without notice. The Seminole Recreation Center reserves the right to cancel programs as deemed necessary. A full refund will be made in the event a program is cancelled by the Recreation Center prior to the start date. If you are not completely satisfied with a class, notify office staff before the start of the second class and fill out a REFUND REQUEST FORM. A refund check will be issued upon approval.

### ACCESSIBILITY

The City of Seminole Recreation Center is working to be in compliance with all ADA codes wherever possible. The Recreation Center is working to better serve individuals with disabilities through facility accessibility and programming. If you require special assistance in order to participate in any of our programs, please contact the Recreation Director two (2) weeks prior to the start of the program. We will do our best to provide you with whatever assistance you may need.

### FACILITY CLOSURES

Sept 2	Labor Day
Oct 25	Close at 3pm
Nov 11	Veterans Day
Nov 27	Close at 6pm
Nov 28 & 29	Thanksgiving
Dec 13	Close at 3pm
Dec 24	Close at 6pm
Dec 25	Christmas
Jan 1	New Years

## SPONSORSHIPS & COMMUNITY PARTNERS

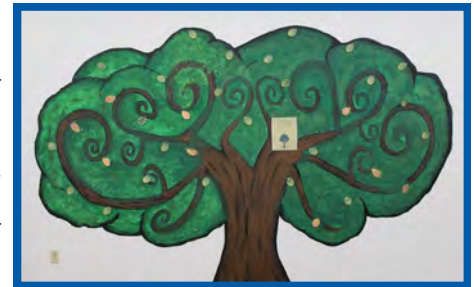
Is your business or organization looking for exposure to thousands of Seminole residents and friends? Partnering with Seminole Recreation for athletic leagues, special events, tournaments and various other activities will put you and your business in front of potential customers. Packages start as low as \$100. For information contact the Recreation Department at 727-391-8345.

## VOLUNTEER INFORMATION

If you are interested in becoming a volunteer with Seminole Recreation, pick up an application in the Recreation Office. This program is available for responsible individuals ages 12 and older. Adults may be required to complete a Level 2 background check at their own expense.

## THE POSITIVI-TREE

Have you noticed the artwork in the Recreation Center lobby? Leave a kind note for someone on the Positivi-tree. Leaflet notes can be picked up at the Front Office. Spread some positivity by leaving a note for someone on the tree!



## PHOTO POLICY

Staff or a designee may take photographs of participants and use these images in the promotion and marketing of the Recreation Center's programs, which may include media coverage and/or viewing by the general public.

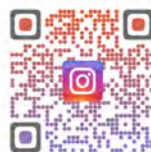


## GET CONNECTED

Connect with us to get the latest information about Seminole Recreation with important notices and special offers on programs and activities.



Like our Facebook page  
[www.facebook.com/getseminole](http://www.facebook.com/getseminole)



Follow us on Instagram  
[@getseminole](https://www.instagram.com/getseminole)

## CREDIT CARD FEES

All credit and debit card transactions will be subject to the following fees:

\$1.00 fee for transactions up to \$200.

\$5.00 fee for transactions more than \$200.

# get outside.

## CITY OF SEMINOLE PARKS

Blossom Lake Park  
10407 Blossom Lake Drive, Seminole, FL 33772



Seminole City Park  
7464 Ridge Road, Seminole, FL 33772



Tennis Club Park  
7283 113th Street N, Seminole, FL 33772



Waterfront Park  
10400 Park Boulevard, Seminole, FL 33772



All parks are open from dawn to dusk

## PAVILION RENTALS

Park pavilions are available for reservations.  
The reservation fee is only for that shelter.

*Tax is additional on pavilion reservations.  
Added fee for inflatable use at Seminole City Park.*

## PAVILION RENTALS

Seminole City Park Pavilion 1  
Recreation Members

\$50 without Power      \$65 with Power

Non-Members

\$70 without Power      \$85 with Power

All Other Pavilions

*Blossom Lake Park, Seminole City Park,  
Seminole Recreation Center, Waterfront Park*

Recreation Members

\$35 without Power      \$45 with Power

Non-Members

\$50 without Power      \$60 with Power



## RECREATION CENTER RENTALS

The Recreation Center has meeting rooms, an auditorium and other spaces available for corporate meetings, birthday parties, holiday gatherings, weddings and other celebrations.

For more information contact Kacy Little at 727-391-8345 or at [klittle@myseminole.com](mailto:klittle@myseminole.com)



# Park Spotlight

## Seminole City Park

7464 Ridge Road  
Seminole, FL 33772

### Amenities:

- Playground
- Bandshell
- 3 Pavilions
- Access to Pinellas Trail
- Home to Seminole Historical Society
- Special Events include Art in the Park, Family Night Out, Music in the Park and Taco Fest

**"What a beautiful little park"**

**"My kids love this park!"**

**"Great location for a family hangout"**





# get active.



<b>PURE PILATES</b> ● \$4 Members \$6 Non-Members	9:00am-10:00am Mon/Wed/Fri This mat-based class incorporates the use of stability and Pilates balls, weights and ring. Pilates can improve balance, flexibility and strength.
<b>FIT FOREVER</b> ● \$3 Members \$4.50 Non-Members	10:15am-11:15am Mon/Wed/Fri This workout includes cardiovascular activity followed by resistance and core exercises improving energy and overall fitness.
<b>CIRCUIT TRAINING</b> ● \$5 Members \$7.50 Non-Members	12:00pm-12:45pm Mon/Wed Rotate through various stations incorporating weights, steps, jump rope and more to target different muscles.
<b>CARDIO DRUMMING</b> ● \$5 Members \$7.50 Non-Members	6:15pm-7:00pm Mon/Tue/Wed Grab your drumsticks for this upbeat workout that includes movement and body resistance exercises with a diverse selection of music.
<b>STEP-TASTIC!</b> ● \$3 Members \$4.50 Non-Members	9:00am-10:00am Tue/Thur This high-intensity, low-impact workout will improve your overall fitness targeting your legs, upper body and core. Try it with or without a step.
<b>STRETCH &amp; STRENGTH YOGA</b> ● \$5 Members \$7.50 Non-Members	10:15am-11:15am Tue This hatha yoga class uses fluid poses to bring strength, length and energy to the body while incorporating stress reducing breath work.
<b>BIKE BOOTCAMP</b> ● \$5 Members \$7.50 Non-Members	6:15pm-7:00pm Tue/Thur Grab your weights for this twist on traditional spin. This class offers an aerobic, strength and toning workout.
<b>STRETCH &amp; RELAX YOGA</b> ● \$5 Members \$7.50 Non-Members	7:00pm-8:00pm Wed This evening hatha yoga class aims to strengthen and lengthen the body with stress reducing breath work and relaxation to wind down.

Enroll in the monthly Get Fit Pass and take unlimited classes with a red dot ●

\$32 Members / \$48 Non-Members

**GET FIT PASS**



## PERSONAL TRAINING

Contact us to schedule a one-on-one appointment with one of our certified trainers. Training sessions are 40 minutes.

Ages 12 & up

### Per Session

\$32 Members / \$48 Non-Members

Monthly Package (4 sessions per month)

\$120 Members / \$180 Non-Members



## FITNESS CENTER ORIENTATION

FIRST MONDAY OF THE MONTH  
5:00PM-6:00PM

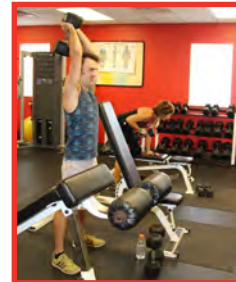
THIRD WEDNESDAY OF THE MONTH  
1:00PM-2:00PM

FREE BY APPOINTMENT ONLY

## FITNESS CENTER ACCESS

Youth ages 12 and up may use the Fitness Center with an adult

Youth ages 15 and up may use the Fitness Center unaccompanied



## “FALL INTO FITNESS” GROUP FITNESS SERIES

Get fit this fall in the new small group fitness series! Grab a friend or come solo as we keep each other accountable to our fitness goals with fun and effective full-body workouts.

Tuesdays & Thursdays, 5:15pm-6:00pm

September - September Shreds

October - Spooktacular Fitness

November - Give Thanks and Planks

December - Festive Fitness

\$32 Members / \$48 Non-Members (monthly)



## GYMNASIUM SCHEDULE (September-November)

MONDAY	TUESDAY	WEDNESDAY	THURSDAY	FRIDAY	SATURDAY
Pickleball 8:00am-10:00am	Experienced Pickleball 8:00am-10:00am	Pickleball 8:00am-10:00am	Experienced Pickleball 8:00am-10:00am	Pickleball 8:00am-10:00am	Pickleball 8:00am-11:00am
Fit Forever 10:15am-11:15am		Fit Forever 10:15am-11:15am		Fit Forever 10:15am-11:15am	
Homeschool P.E. 12:00pm-12:45pm				Homeschool P.E. 12:00pm-12:45pm	16+ Basketball 12:00pm-2:00pm
	16+ Basketball 6:00pm-8:00pm		Pickleball 6:00pm-8:00pm	Youth Pickleball 5:30pm-6:30pm	

MONDAY	TUESDAY	WEDNESDAY	THURSDAY	FRIDAY	SATURDAY
Pickleball 8:00am-10:00am	Experienced Pickleball 8:00am-10:00am	Pickleball 8:00am-10:00am	Experienced Pickleball 8:00am-10:00am	Pickleball 8:00am-10:00am	Pickleball 8:00am-11:00am
Fit Forever 10:15am-11:15am		Fit Forever 10:15am-11:15am		Fit Forever 10:15am-11:15am	
Homeschool P.E. 12:00pm-12:45pm				Homeschool P.E. 12:00pm-12:45pm	16+ Basketball 12:00pm-2:00pm
Youth Basketball 5:00pm-8:00pm	16+ Basketball 6:00pm-8:00pm	Youth Basketball 5:00pm-8:00pm	Pickleball 6:00pm-8:00pm	Youth Pickleball 5:30pm-6:30pm	

*Gymnasium schedule is subject to change at the discretion of the Recreation Director  
See the calendar posted at the Gymnasium for an up-to-date schedule*

### GROUP FITNESS CLASSES First Class is Free!

Consider trying one of our eight different Group Fitness Classes. From Pure Pilates to Step-tastic! to Cardio Drumming—there is something for everyone. And remember, your first class is FREE!



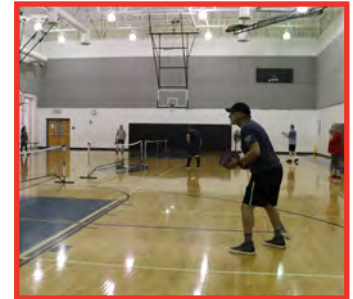


## PICKLEBALL

Pickleball is a paddle sport that combines elements of tennis, badminton and ping-pong. The rules are simple and fun. Open and Experienced times are available, but we do not exclude participants or rate players based on skill. See the gymnasium schedule for a complete schedule.

All ages welcome

Members FREE / \$5 Non-Members



### SEPTEMBER INTERMEDIATE PICKLEBALL

Build on the fundamentals of the game including serves, returns, kitchen and strategy. Ages 16+

Tuesdays & Thursdays, September 3-26  
11:30am-1:30pm

\$90 Members / \$135 Non-Members



### OCTOBER INSTRUCTIONAL PICKLEBALL

Learn the basics of the game including scoring, court position, strategy and more. Ages 16+

Tuesdays & Thursdays, October 1-24  
11:00am-12:30pm

\$65 Members / \$97.50 Non-Members



### NOVEMBER INTERMEDIATE PICKLEBALL

Build on the fundamentals of the game including serves, returns, kitchen and strategy. Ages 16+

Tuesdays & Thursdays, November 5-21  
12:30pm-2:30pm

\$65 Members / \$97.50 Non-Members



### DECEMBER INSTRUCTIONAL PICKLEBALL

Learn the basics of the game including scoring, court position, strategy and more. Ages 16+

Tuesdays & Thursdays, December 3-19  
12:00pm-2:00pm

\$65 Members / \$97.50 Non-Members

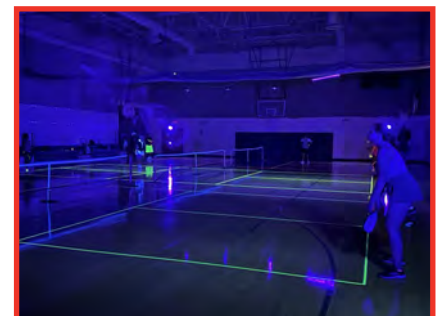


### GLOW-IN-THE-DARK PICKLEBALL

Join us for a night of glow-in-the-dark pickleball! Grab your neon and white and decorate your paddle to shine bright on the court! All skill levels are welcome.

Friday, November 8  
7:00pm-10:00pm

\$5 Members / \$7.50 Non-Members



get active.



# Youth Basketball

## INSTRUCTIONAL BASKETBALL LEAGUE

This introductory league includes 30-minutes of instruction followed by 30-minutes of scrimmages!

Ages 6-8

Fridays, January 10-February 28

6:00pm-8:00pm

\$50 Members / \$75 Non-Members



## JUNIOR & SENIOR BASKETBALL LEAGUES

This recreational league builds on the fundamentals of the sport with practices and games. Practices are held Mondays and Wednesdays beginning December 2. Games begin January 4 and are held on Saturdays and weeknights. All teams participate for an end-of-season tournament with the conclusion on March 1. A full schedule can be found at [www.Quickscores.com/GetSeminole](http://www.Quickscores.com/GetSeminole). *No practices the week of December 23.*

Junior League: Ages 9-11

Mandatory Skills Evaluation: Monday, November 18 at 6:00pm

Senior League: Ages 12-14

Mandatory Skills Evaluation: Wednesday, November 20 at 6:00pm

Players not in attendance for the skills evaluation will be placed on a team by the League Coordinator. Registration closes Friday, November 15.

\$102 Members / \$153 Non-Members



## BASKETBALL TRAINING

Improve your basketball skills with our experienced basketball trainers! Register for a private session or sign up for a small group session with friends. Contact the Recreation Center to schedule a session. Sessions are 1 hour. Ages 8-16

### Private Session

\$35 Members / \$52.50 Non-Members

### Small Group Session

\$25 Members / \$37.50 Non-Members (per person)

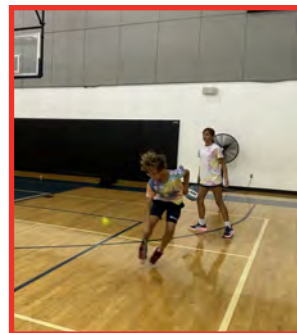
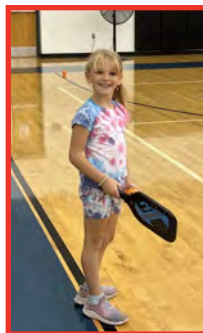
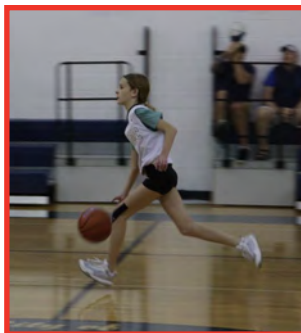


## YOUTH PICKLEBALL

Grab a friend or come solo to learn and practice pickleball during this youth-only hour. Ages 6-15

Fridays, 5:30pm-6:30pm

Members FREE / \$5 Non-Members



## YOUTH COACH VOLUNTEERS NEEDED

Consider volunteering your time as a coach. Any team without a coach will be disbanded and refunded. No experience necessary, just a desire to see kids have fun! Contact us if you can help or know of someone suitable. Volunteer coaches receive 50% credit toward another season of youth sports! A background check is required. Training and materials are provided.



## YOUTH SOCCER

Visit [www.seminolefc.com](http://www.seminolefc.com) for more information on Seminole FC's youth soccer programs including competitive and recreation leagues and trainings.



get active.

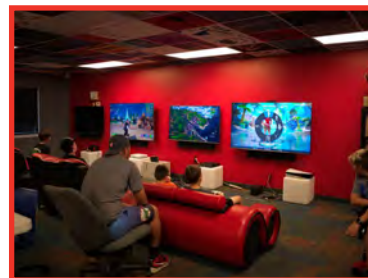
# *Seminole Recreation Esports*

## OPEN PLAY TIMES

Monday, Wednesday, Friday  
4:00pm-7:00pm

Saturday  
11:00am-2:00pm

Members FREE / \$5 Non-Members

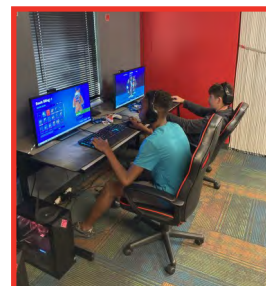
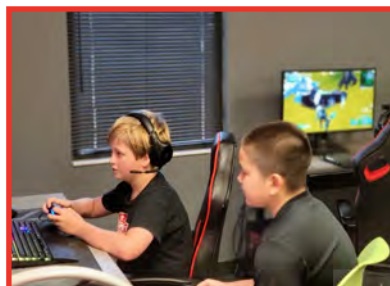


## ESPORTS TEAM

Sign up for the Seminole Rec Esports Team. This team focuses on problem solving, hand-eye coordination, teamwork and development. Participate in weekly scrimmages with other players and recreation centers. Games include Fortnite, Rocket League, Super Smash Bros. Ultimate, FC, and Apex Legends.

Beginner Class - Grades K-5<sup>th</sup>  
Tuesdays, 5:00pm-6:00pm  
\$10 Members / \$15 Non-Members (per session)

Advanced Class - Grades 6<sup>th</sup>-10<sup>th</sup>  
Tuesdays, 6:00pm-8:00pm  
\$20 Members / \$30 Non-Members (per session)



Sessions: September 3-24, October 1-22, October 29-November 19, November 26-December 17

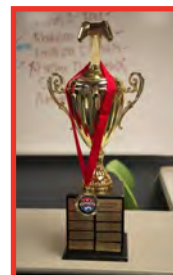
## ESPORTS LEAGUES

Have fun and meet new friends in leagues dedicated to your favorite games. Match up weekly against opponents and league ends with a playoff.

Thursdays, 5:00pm-6:00pm

October 3-24: EA College Football  
December 5-26: Fortnite

\$10 Members / \$15 Non-Members (per League)





## TOURNAMENT SERIES

Join us for the exciting Esports tournament series! Tournaments provide a fun-filled experience along with friendly competition! Pizza and drink are included with entry fee. Prizes go to top three finishers. Pre-registration is recommended to secure your spot. Space is limited.

Doors open at 5:00pm, Matches begin at 5:30pm

Friday, September 13 - Super Smash Bros. Ultimate

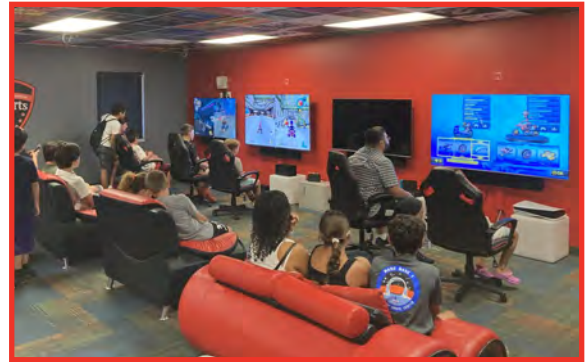
Friday, October 18 - College Football 25

Friday, November 15 - Mario Kart 8 Deluxe

Friday, December 20 - Fortnite

\$12 Entry Fee

\*No Open Play during Tournament



## FORTNITE OG MAP CHAPTER 2 RELEASE

Drop in and play the OG map of Fortnite with friends on PC and console.

Saturday, November 2

2:00pm-5:00pm

\$3 Members / \$4.50 Non-Members



## ESPORTS LOUNGE

- 7 state-of-the-art gaming PCs
- Playstation 4 & 5
- Nintendo Switch
- XBOX
- High Tech Full Body Racing Simulator
- Big screen TVs
- Projector with surround sound
- Professional gaming chairs, couches and furniture
- Games including Roblox, Fortnite, Rocket League, Super Smash, Mario Kart, Sports games and more

*Follow us online*

Instagram



Twitch



Youtube



get active.

# Family Aquatics

## POOL HOURS

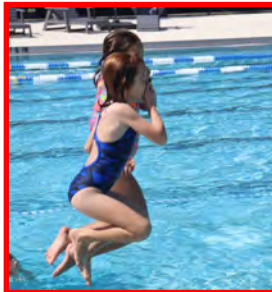
Fall Hours  
September 1-28

Saturdays  
8:00am-10:00am - Adult Lap Swim  
10:00am-2:00pm - Open Swim

## POOL FEES

<u>Members</u>	<u>Non-Members</u>
Youth \$2.00	Youth \$4.00
Adult \$3.00	Adult \$6.00

Anyone entering the Aquatic Center is subject to pool fees. Children 2 and under are free with a paying adult.



Interested in becoming a Lifeguard?

We train and certify lifeguards ages 15 and older. Contact the Recreation Center if you or someone you know might be interested in an upcoming class.

# PawCH POOL PARTY

## Saturday, October 5

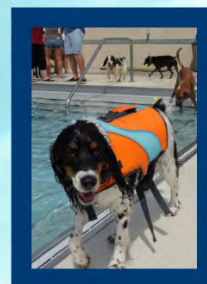
11:00am-1:00pm

**Large Dogs (more than 30 lbs)**

12:00pm-2:00pm

**Small Dogs (less than 30 lbs)**

We mark the end of the pool season with a day for the dogs to play, swim and have fun at the pool!







CITY OF SEMINOLE



# MUSIC IN THE PARK



SEPTEMBER 20  
SEMINOLE HIGH SCHOOL BAND



SEPTEMBER 27  
TWINLE & ROCH SOUL RADIO

FRIDAYS, 7:00PM-9:00PM

\$3 EVENT PARKING

SEMINOLE CITY PARK

7464 RIDGE ROAD, SEMINOLE, FL 33772



OCTOBER 4  
MIDNIGHT JOKER



OCTOBER 11  
SMOOTH D AND THE BOYZ



9TH ANNUAL

# HOLIDAY CRAFT FAIR



SATURDAY, NOVEMBER 23

10:00 AM - 3:00 PM

INDOOR EVENT  
100 CRAFT VENDORS  
CONCESSIONS AVAILABLE



**HAND-CRAFTED ITEMS:**  
ART, JEWELRY, WOODWORKS, BAKED GOODS, FABRICS, DECORATIONS & MORE



# get fun.

## PRESCHOOL PLAYTIME

Join the Programs team on the playground to play games, socialize and make new friends.

Ages 2-4

Tuesdays, 10:30am-11:00am

FREE



## LIL OLYMPIANS

Participate in fun and interactive events to become a junior Olympian!

Ages 4-6

Tuesdays, September 3-24  
5:30pm-6:00pm

\$27 Members  
\$40.50 Non-Members

## LIL GOLFERS

Learn the world of golf by participating in fun ways to enhance your skills.

Ages 4-6

Tuesdays, October 8-29  
5:30pm-6:00pm

\$27 Members  
\$40.50 Non-Members

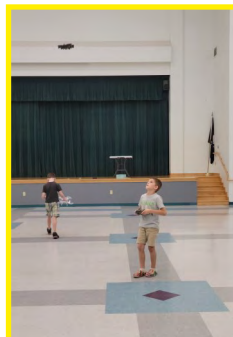
## LIL RUNNERS

Get your kids running by playing fun and organized group games!

Ages 4-6

Tuesdays, November 5-26  
5:30pm-6:00pm

\$27 Members  
\$40.50 Non-Members



## YOUNG CHEFS

Learn basic cooking skills and create tasty recipes in this hands-on cooking class.

Ages 7-11

Wednesdays, October 2-23  
6:00pm-7:00pm

\$37 Members / \$55.50 Non-Members  
**Hosted at Seminole City Park's Parkview Room,**  
7464 Ridge Road, Seminole, FL 33772

## DRONE FLIGHT SCHOOL

Take flight in the introductory class as we learn about drones and practice aerial stunts with different drone types.

Ages 7-11

Wednesdays, October 30-November 20  
6:00pm-7:00pm

\$37 Members / \$55.50 Non-Members



get fun.



# KIDS' NIGHT OUT

The Rec hosts themed activities each month the kids won't want to miss!

Grades K-5<sup>th</sup>

6:00pm-10:00pm

\$17 Members / \$25.50 Non-Members

Friday, September 27 - Jumpin' Fun!

Friday, November 15 - All Star Sports

Friday, October 18 - Halloween Extravaganza

Friday, December 20 - White Christmas

Pizza is provided. Drinks and snacks available for purchase.

*Pre-registration is recommended. Space is limited.*

## WINTER BREAK CAMP

Keep the kids entertained and engaged with games and activities at Winter Break Camp. *Minimum of 20 participants needed for program. Pre-registration is required.*

Grades K-5<sup>th</sup>

7:00am-6:00pm

Week 1: December 23-27

Tuesday, December 24, Pick Up by 5:30pm

Closed Wednesday, December 25

Week 2: December 30-January 3

Closed Wednesday, January 1

\$85 Residents (per week)

\$95 Non-Residents (per week)

*Annual Recreation Membership Required*

## SCHOOL'S OUT DAYS

These days include indoor and outdoor games, crafts and activities to keep your child engaged and active when school is out. *Minimum of 10 participants needed for program. Pre-registration is required.*

Grades K-5<sup>th</sup>

7:00am-6:00pm

Monday, October 14

Monday, November 25

Tuesday, November 26

Wednesday, November 27

Monday, January 6

\$25 Residents (per day)

\$35 Non-Residents (per day)

*Annual Recreation Membership Required*

get fun.

# Homeschool Activities

## HOMESCHOOL ART

Students will exercise creativity as we learn new art techniques to make beautiful creations. *Minimum of 8 participants needed for program.*

Ages 5-11

Mondays & Fridays, 11:00am-11:45am

Session Dates; September 6-30, October 4-28, November 1-25, December 2-27

No classes: Monday, September 2, Monday, November 11, Friday, November 29

\$20 Members / \$30 Non-Members (monthly rate)

\$4 Members / \$6 Non-Members (drop-in rate)



## HOMESCHOOL P.E.

Students will learn and play a variety of recreational games and activities. *Minimum of 8 participants needed for program.*

Ages 5-11

Mondays & Fridays, 12:00pm-12:45pm

Session Dates; September 6-30, October 4-28, November 1-25, December 2-27

No classes: Monday, September 2, Monday, November 11, Friday, November 29

\$15 Members / \$22.50 Non-Members (monthly rate)

\$3 Members / \$4.50 Non-Members (drop-in rate)



## HOMESCHOOL ESPORTS

Students will use communication and teamwork with their peers in Esports.

Ages 5-11

Wednesdays, 11:00am-11:45am

Session Dates; September 4-25, October 2-23, October 30-November 20

\$10 Members / \$15 Non-Members (monthly rate)

\$3 Members / \$4.50 Non-Members (drop-in rate)





get fun.

# Teen Programs



## TEEN CHEFS

Teens head to the kitchen to whip up tasty dishes with different ingredients. *Minimum of 6 participants needed for program.*  
**Hosted at Seminole City Park's Parkview Room, 7464 Ridge Road, Seminole, FL 33772.**

Grades 6<sup>th</sup>-10<sup>th</sup>

Mondays, October 7-28  
6:00pm-7:00pm

\$40 Members / \$60 Non-Members

## TEEN TRIP

Undead in the Water  
American Victory Ship Haunted Attraction

Navigate the haunted maze of the USS American Victory Ship in Tampa on this fun and spooky Halloween trip. *Minimum of 8 participants needed for program.*

Grades 6<sup>th</sup>-10<sup>th</sup>

Saturday, October 26  
Time TBD 6:00pm-10:00pm

\$45 Members / \$67.50 Non-Members

## REC AFTER DARK

These RAD outings are perfect for teens! *Minimum of 8 participants needed for program.*

Grades 6<sup>th</sup>-10<sup>th</sup>

Fridays, 7:00pm-11:00pm

Friday, September 6 - Fear Factor @ Rec Center  
\$15 Members / \$22.50 Non-Members

Friday, October 4 - Catapult Adventure Park  
\$33 Members / \$49.50 Non-Members

Friday, November 1 - Buffalo Wild Wings: Hot Wing Challenge  
\$21 Members / \$31.50 Non-Members

Friday, December 6 - Skyzone  
\$32 Members / \$48 Non-Members



# get artsy.

## BATON

Learn the basics of baton twirling and progress to become a competitive twirler!  
Ages 4 & up



Pricing is monthly

### Thursdays

Recreational Team 5:30pm-6:00pm \$45 Members / \$67.50 Non-Members

A foundation class where students learn the basics of baton twirling.

Beginner Competitive Team 6:00pm-7:00pm \$85 Members / \$127.50 Non-Members

Entry level competitive team that develops skills and the fundamentals of team competition.

Advanced Competitive Skills 7:00pm-8:00pm \$32 Members / \$48 Non-Members

Students harness their skills as teammates and twirlers and learn complex moves.

### By appointment only

Private Lessons (30-minute sessions) \$37 Members / \$55.50 Non-Members



## BIRTHDAY PARTY PACKAGES

Take the worry out of party planning and let our Recreation Staff do it for you! Packages include room fee, set up and decorating, and a Party Coordinator. You provide the cake, drinks and food. Package options include: Sports & Recreation, Creative Art, and Themed Parties. Packages start at \$150.

Contact Maren at [manderson@myseminole.com](mailto:manderson@myseminole.com) to start planning your party today!





## IRISH DANCE CLASS

Classes will provide a fun and healthy dance environment for dancers, building confidence, strength, focus and friendship. Wear workout attire and comfortable shoes you can dance in. No experience necessary. *Pre-registration is required.*

Youth, Ages 6-12  
Saturdays, 9:30am-10:30am

Adults  
Saturdays, 10:30am-11:30am

\$75 Members / \$112.50 Non-Members (per month)



## PAINT LIKE BOB ROSS Workshop

Participate in a Bob Ross Workshop taught by a certified Bob Ross Instructor! Paint beautiful Bob Ross style landscape scenes utilizing all the Bob Ross branded paints, brushes, pallet knives, etc. creating a fun and rewarding experience in about three hours. Walk away after the workshop with a masterpiece and remaining paint supplies. *Pre-Registration is required.*

10:00am-1:00pm

Saturday, October 26  
Saturday, November 16  
Saturday, December 7

\$99 per person (per workshop date)



## PUMPKIN CARVING PARTY

Bring your pumpkin, tools and creativity for this carving party! Carve your unique design or one that's provided. Leave your pumpkin for the "Field of Screams" Carved Pumpkin Contest (Friday, October 25). Limited carving tools will be available. Drinks and snacks will be served.

Thursday, October 24  
5:00pm-7:00pm


FREE to attend



get together.

# Active Adults

## DAY TRIPS

All trips require payment at the time of registration and are non-refundable. Non-Members may register two weeks prior to each trip. Non-Members can contact the Recreation Center to be added to the waitlist.  Indicates heavy walking.

Seminole Hard Rock Casino, Tampa (Bus Only)

Thursday, September 19, 9:30am-3:30pm \$12 Members / \$18 Non-Members

Tampa Premium Outlets, Wesley Chapel (Bus Only) 

Tuesday, September 24, 9:30am-2:30pm \$12 Members / \$18 Non-Members

Armature Works/Tampa Riverwalk, Tampa (Bus Only) 

Tuesday, October 8, 9:30am-2:30pm \$12 Members / \$18 Non-Members

Seminole Hard Rock Casino, Tampa (Bus Only)

Thursday, October 17, 9:30am-3:30pm \$12 Members / \$18 Non-Members

**Gallagher's Pumpkin Farm**, St. Petersburg (Bus Only) 

Tuesday, October 22, 9:30am-1:30pm \$8 Members / \$12 Non-Members

Sarasota International Chalk Fest, Sarasota (Bus & Admission) 

Friday, November 8, 9:30am-2:00pm \$32 Members / \$48 Non-Members

Lakeridge Winery & Lunch, Clermont (Bus Only)

Tuesday, November 12, 9:30am-3:30pm \$15 Members / \$22.50 Non-Members

Seminole Hard Rock Casino, Tampa (Bus Only)

Thursday, November 21, 9:30am-3:30pm \$12 Members / \$18 Non-Members

Henry Plant Museum Victorian Christmas Stroll & Lunch, Tampa (Bus & Admission) 

Tuesday, December 3, 9:30am-1:30pm \$26 Members / \$39 Non-Members

Seminole Hard Rock Casino, Tampa (Bus Only)

Thursday, December 19, 9:30am-3:30pm \$12 Members / \$18 Non-Members

Christmas Light Tour of Local Neighborhoods, Seminole (Bus Only)

Monday, December 23, 6:00pm-8:30pm \$8 Members / \$12 Non-Members



## AFTERNOON DELIGHT

Join us each week for a showing of a fan-favorite movie on the big screen. Popcorn is provided.

Wednesdays, 12:00pm

\$2 Members / \$3 Non-Members

## LINE DANCING

Combine exercise and dance in this fun, rhythmic class. Step-by-step instruction will guide you through dances.

Tuesdays, 4:30pm-5:30pm

\$4 Members / \$6 Non-Members

## WALKING CLUB

Meet at the Recreation Center to get your steps in while enjoying fresh air and friendly conversation.

Mondays, 9:00am-9:30am

Members FREE / \$5 Non-Members

## JIGSAW PUZZLE CLUB

Enjoy an afternoon filled with conversation and collaboration as we assemble fun jigsaw puzzles each week.

Thursdays, 1:00pm-2:00pm

Members FREE / \$5 Non-Members



## POTTERY PAINTING

Get creative as we paint themed pottery pieces each month. *Pre-registration is required.*

First Tuesday of the month, 11:00am-12:00pm

Tuesday, September 3 - Fall Plate

Tuesday, October 1 - Pumpkin

Tuesday, November 5 - Vase

Tuesday, December 3 - Holiday Ornaments

\$12 Members / \$18 Non-Members



get together.

# Special Events

## Music in the Park

Friday, September 20	7:00pm-9:00pm	Seminole City Park	\$3 Event Parking
Friday, September 27	7:00pm-9:00pm	Seminole City Park	\$3 Event Parking
Friday, October 4	7:00pm-9:00pm	Seminole City Park	\$3 Event Parking
Friday, October 11	7:00pm-9:00pm	Seminole City Park	\$3 Event Parking

## Pooch Pool Party

Saturday, October 5	11:00am-2:00pm	Family Aquatic Center	\$5 per dog
---------------------	----------------	-----------------------	-------------

## Field of Screams

Friday, October 25	6:00pm-9:00pm	Recreation Complex	\$7 Activity Band
--------------------	---------------	--------------------	-------------------

## Holiday Craft Fair

Saturday, November 23	10:00am-3:00pm	Recreation Center	FREE
-----------------------	----------------	-------------------	------

## Waterless Holiday Boat Parade

Sunday, December 8	6:00pm-8:00pm	113 <sup>th</sup> Street North	FREE
--------------------	---------------	--------------------------------	------

## WinterFest

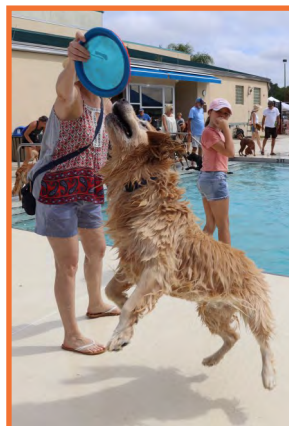
Friday, December 13	5:30pm-9:30pm	Recreation Complex	\$7 Activity Band
---------------------	---------------	--------------------	-------------------

## Breakfast with Santa

Saturday, December 21	9:00am, 11:00am	Parkview Room	\$7 per person
-----------------------	-----------------	---------------	----------------

## Food Truck Rally

Saturday, January 11	3:00pm-8:00pm	Recreation Complex	FREE
----------------------	---------------	--------------------	------







# Holiday Winter Fest & Tree Lighting

Friday, December 13

5:30pm-9:30pm

Snow Hill, Bounce Zone, Make & Take Crafts, Holiday Craft Market, Live Entertainment, and a visit from Santa



**\$7 Activity Band**

## BREAKFAST WITH SANTA

SATURDAY, DECEMBER 21

9:00AM-10:30AM

FIRST SEATING

11:00AM-12:30PM

SECOND SEATING

**\$7 per person**

**Pre-Registration is Required**

Hosted at Seminole City Park's Parkview Room  
7464 Ridge Road, Seminole, FL 33772





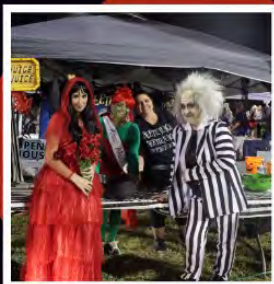


# FIELD OF SCREAMS

**FRIDAY, OCTOBER 25  
6:00PM-9:00PM**

**TRICK OR TREAT STREET, COSTUME CONTEST,  
CARVED PUMPKIN CONTEST, CARVED PUMPKIN  
ALLEY, MUNCHKIN MAYHEM, BOUNCY ZONE,  
FOOD VENDORS & MORE**

**\$7 ACTIVITY BAND**



**TRICK  
OR  
TREAT**

