



FY 2022-2023 BUDGET IN BRIEF



9199 113th Street N., Seminole, FL 33772 (727) 391-0204
www.MySeminole.com

FY 2022-2023

BUDGET SUMMARY:

ALL FUNDS

REVENUES	FY 2023 BUDGET	PERCENT CHANGE
Ad Valorem Taxes	4,691,600	10%
Other Taxes	5,628,500	1%
Licenses and Permits	280,000	-20%
Intergovernmental Revenue	2,493,200	-1%
Charges for Services	10,772,800	12%
Fines and Forfeitures	15,000	7%
Miscellaneous Revenues	555,400	60%
Total	24,436,500	7%

EXPENSES	FY 2023 BUDGET	PERCENT CHANGE
Personnel	15,104,600	7%
Operating	6,404,100	2%
Capital	4,725,900	72%
Other	138,300	0%
Total	26,372,900	13%

CITYWIDE GOALS

- Improve and Maintain Infrastructure
- Enhance Revenues
- Enhance Quality of Life Through Recreation
- Citywide Strategic Planning

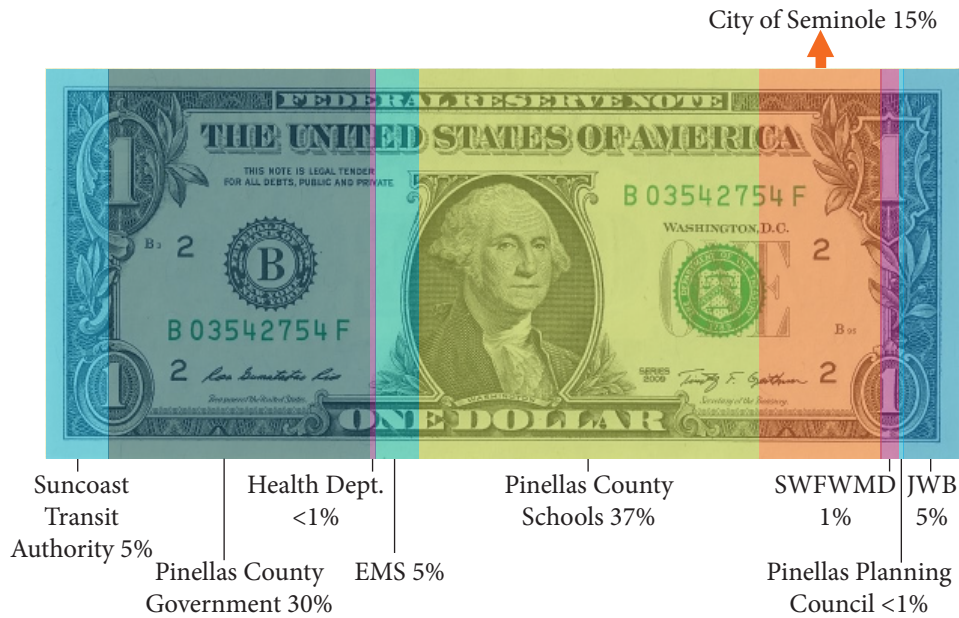
FY 2022-2023

BUDGET HIGHLIGHTS

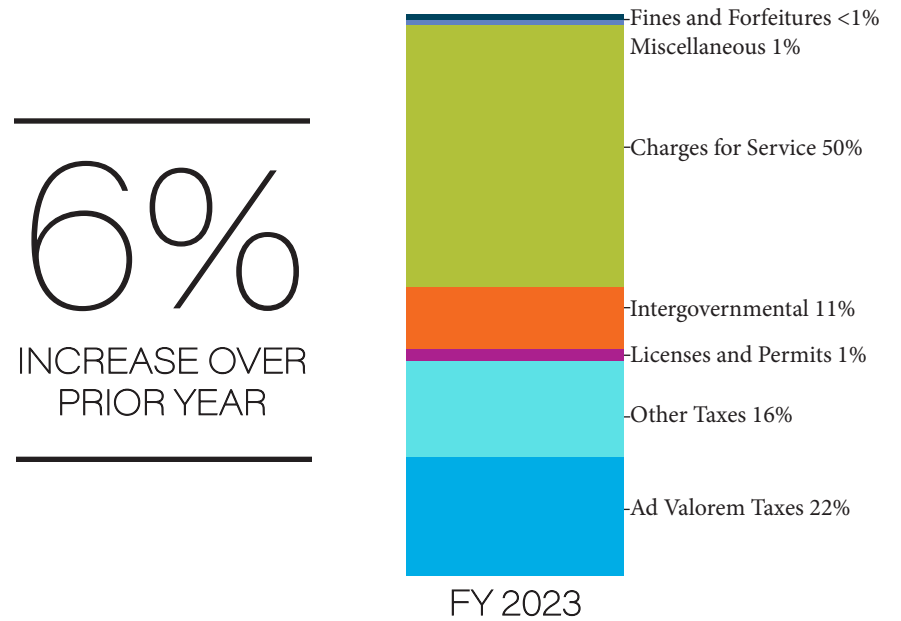
- Millage rate remains the same, at 2.4793 mills, for the sixteenth (16th) consecutive year;
- Beginning Design Phase of a new Fire Station in the Bay Pines area;
- Completion of the Blossom Lake Park Redevelopment project;
- Recreation Master Planning to plan for future Recreation Center renovation or reconstruction; and
- Citywide Strategic Planning with community stakeholders.



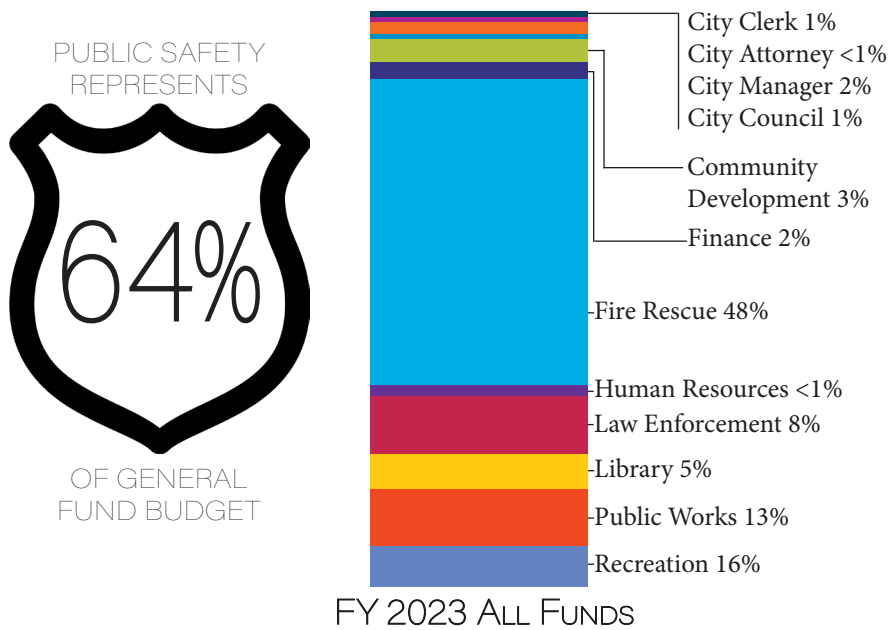
WHERE DOES MY COUNTYWIDE PROPERTY TAX DOLLAR GO?



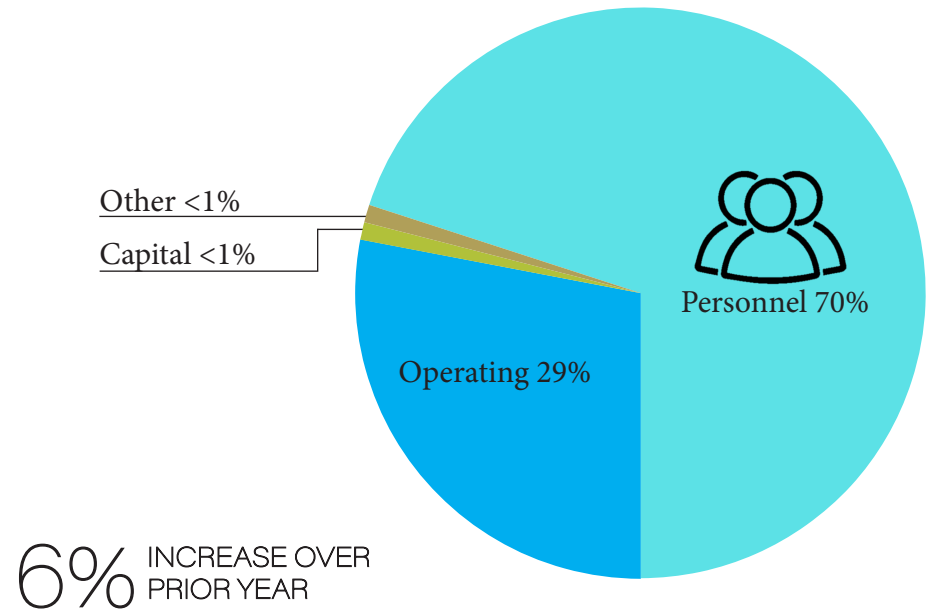
GENERAL FUND REVENUE



EXPENSES BY DEPARTMENT

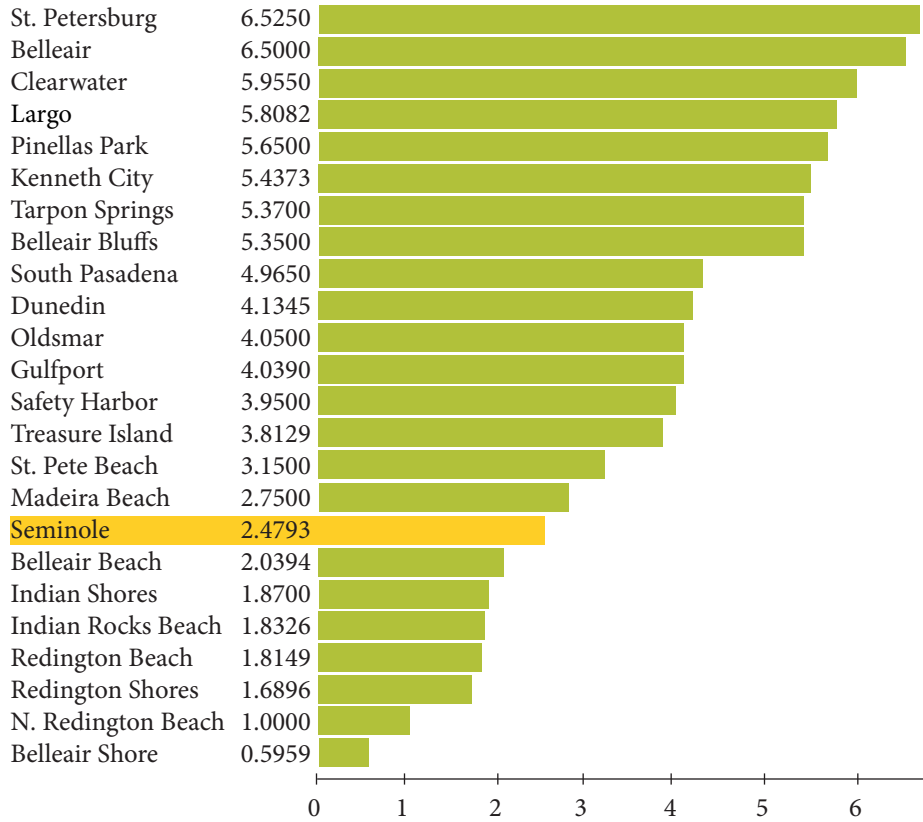


GENERAL FUND EXPENSES BY CATEGORY

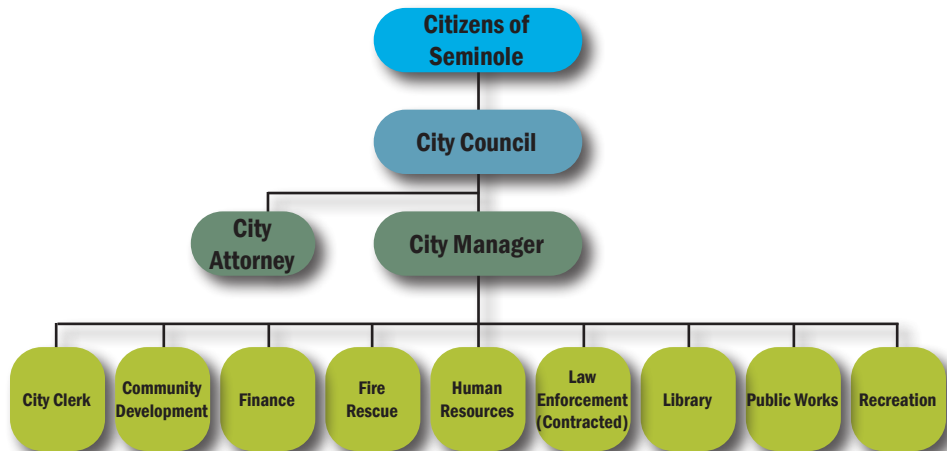


MUNICIPAL TAX RATES COMPARISON

FY 2022-2023 CITY MILLAGE RATES



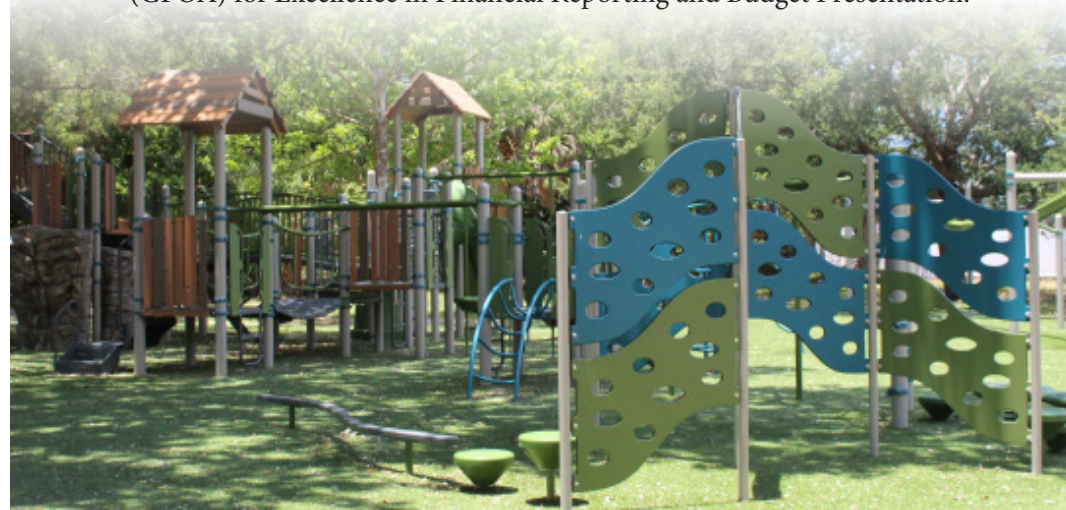
*Mills per \$1,000 in Taxable Value



CITY OF SEMINOLE

"SUPERIOR SERVICES"

- Four City Parks offering a combined 25 acres of parkland and open space;
- Home to Seminole Community Library, which is open 7 days a week, loans more than 250,000 items each year, and hosts more than 700 programs annually;
- A 49,000 sq. ft. Recreation & Aquatic Center;
- More than 200 Recreation Programs annually with over 5,000 participants;
- Over 20 annual Community Events with an attendance of over 21,000;
- Issuance of more than 1,800 building permits annually valued at over \$28 million;
- Completion of more than 4,000 building inspections to preserve the health, safety, and welfare of the community;
- Assist more than 1,100 businesses throughout the city each year in registering their business;
- Emergency response to over 12,000 emergency calls and fire rescue service to over 100,000 City and County residents;
- Law enforcement services provided by nationally recognized Pinellas County Sheriff's Office;
- Maintenance of 12.9 acres of medians and rights-of-way; and
- Nationally recognized by the Government Finance Officers Association (GFOA) for Excellence in Financial Reporting and Budget Presentation.



CITY OFFICIALS

Mayor	Leslie Waters
Vice-Mayor	Roger Edelman
Councilor	Thom Barnhorn
Councilor	Chris Burke
Councilor	Tom Christy
Councilor	Jim Olliver
Councilor	Trish Springer

City Manager	Ann Toney-Deal, ICMA-CM
City Attorney	Jay Daigneault, Esq.
City Clerk	Ann Marie Mancuso, CMC
Finance Director	Allison Broihier, CGFO
Fire Chief	Heather Burford
Public Works Director	Rodney Due
Recreation Director	Becky Gunter, CPRP
Human Resources Director	Erica Ottmann, SHRM-SCP
Library Director	Lorie Tonti
Community Development Director	Wesley Wright

CITY OF SEMINOLE FAST FACTS

- Last Millage Rate Increase: 1996
- Population: 19,316
- Number of Employees: 159 FTE
- Total Budget: \$26,372,900
- General Fund Budget: \$21,525,500
- City Debt: \$0